

# Quick Installation Manual




**NO. G03-BFDADN1QIG-F**  
**Rev: 1.0**  
**Release Date: 2023-09-25**

## **Notice:**

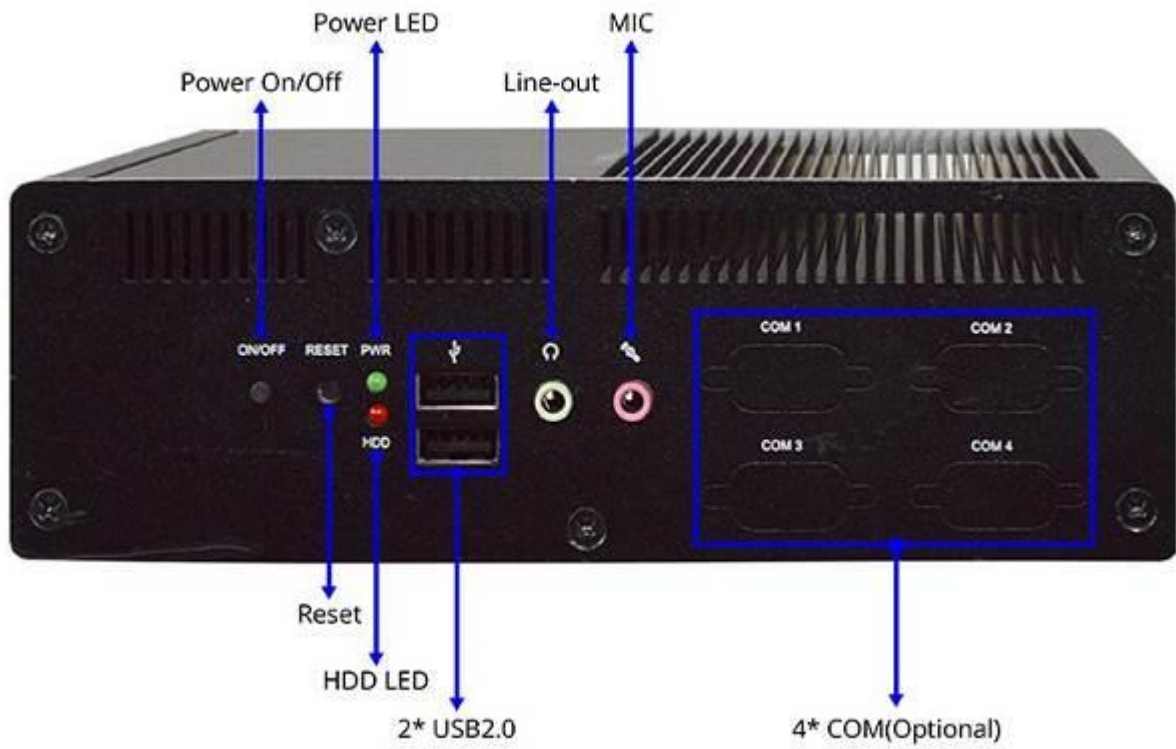
The photos in this file are for illustration purpose only. The model may not be the latest version. Please refer to the product you purchased for actual specification.

# Safety Instructions

1. Read these safety instructions carefully.
2. Retain this user manual for future reference.
3. Disconnect the equipment from all AC outlets before cleaning.  
use only a damp cloth for cleaning. Do not use liquid or spray detergents.
4. For pluggable equipment, the power outlet socket must be located near the equipment and easily accessible.
5. Protect the equipment from humidity.
6. Place the equipment on a reliable surface during installation. Dropping or letting the equipment fall may cause damage.
7. Ensure that the voltage is correct before connecting the equipment to a power outlet.
8. Position the power cord away from high-traffic areas. Do not place anything over the power cord.
9. All cautions and warnings on the equipment should be noted.
10. If unused for a long time, disconnect the equipment from the power source to avoid damage from transient overvoltage.
11. Never pour liquid into an opening. This may cause fire or electrical shock.
12. Never open the equipment. For safety reasons, the equipment should be opened only by qualified service personnel.
13. If one of the following occurs, have the equipment checked by authorized service personnel:
  - The power cord or plug is damaged.
  - Liquid has penetrated the equipment.
  - The equipment has been exposed to moisture.
  - The equipment is malfunctioning or does not operate according to the user manual.
  - The equipment has been dropped and damaged.
  - The equipment shows obvious signs of breakage.
16. Any unverified components may cause unexpected damage. To ensure Correct installation, always use the components (e.g., screws) provided in the accessory box.
17. Batteries are at risk of exploding if incorrectly installed.  
Replace only with the same or equivalent type as recommended by the manufacturer.  
Discard used batteries according to the manufacturer's instructions.
18. Always disconnect the power cord from the chassis before manually handling the hardware.  
Do not implement connections or configuration changes while the device is powered on.  
Sudden power surges may damage sensitive electronic components.
19.  **CAUTION OF HIGH HEAT FROM TOP COVER!!!**  
In working mode, the **BFDADN1-N97** is capable of operating at an ambient temperature of up to 50 °C. In such cases, the temperature of the top cover may reach a high value. Under such a condition, accidental contact with the BFDADN1-N97 needs to be avoided. External surfaces do not need to be touched to operate the equipment. If touching cannot be avoided, please wear protective gloves.

# I/O Outlets

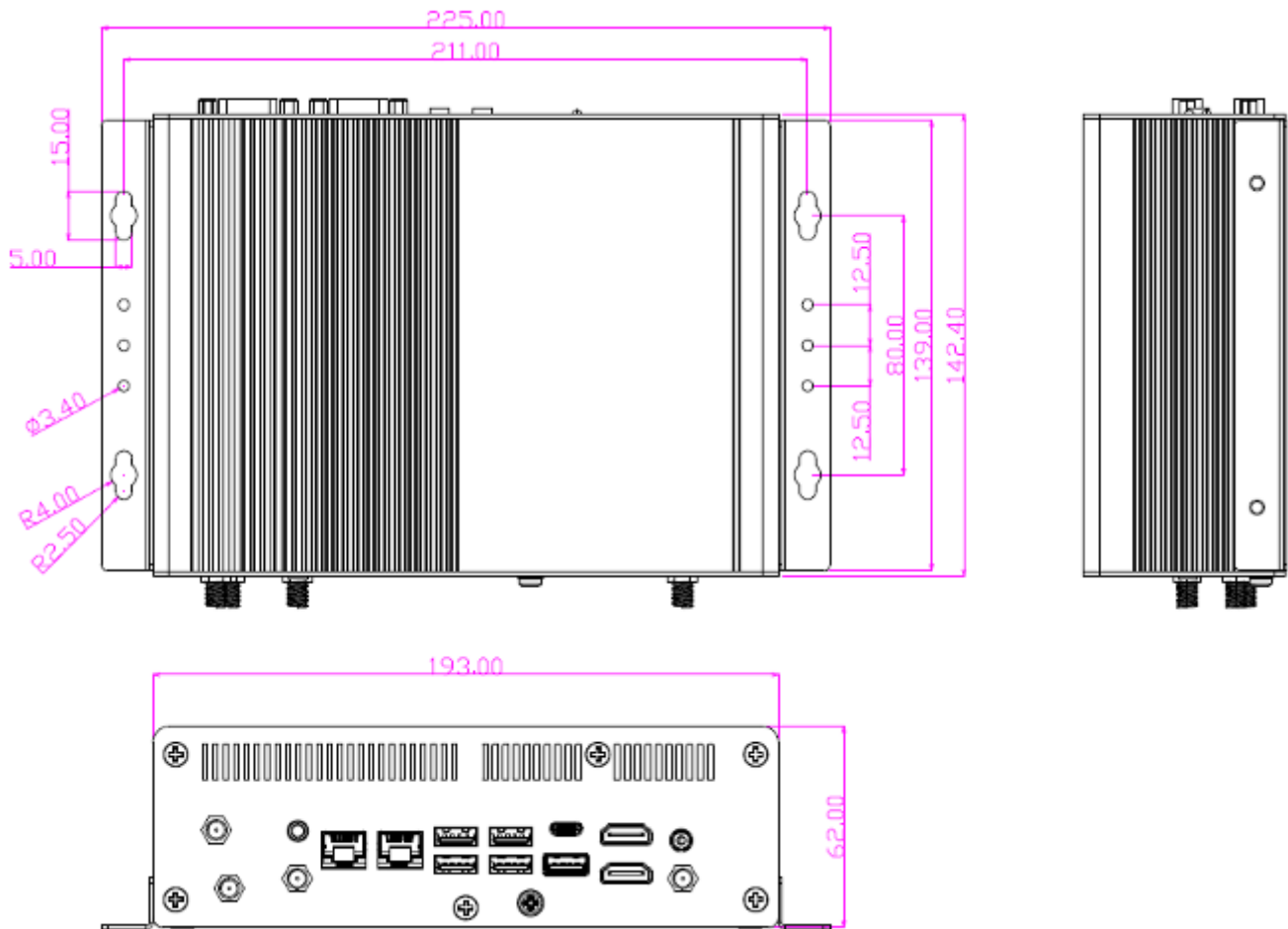
## **Front**



## **Rear**



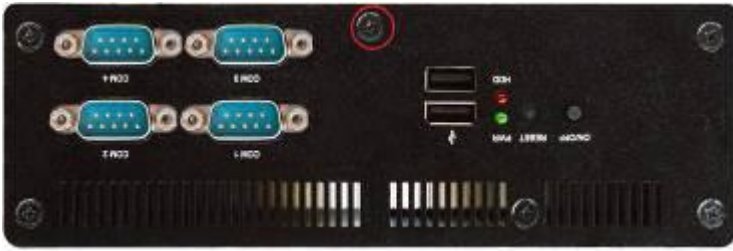
## **Dimension and Outlines**



### **I. To Disassemble the Chassis**



1. Locate the screws at the spots marked on this side of the system and unscrew them one by one.



2. Remove the marked screw on the front IO panel.



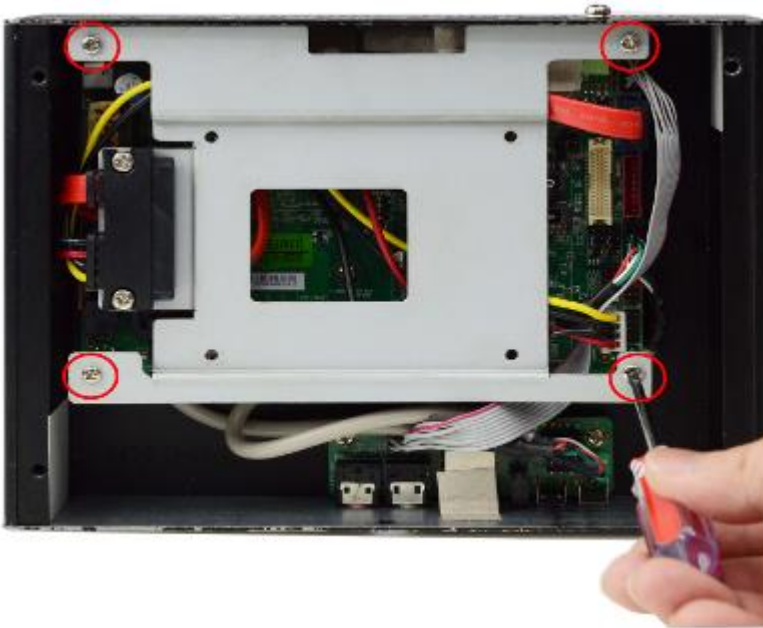
3. Remove the marked screw on the rear IO panel.



4. Lift the cover up to open the chassis.



5. The overview of the internal structure of the system with HDD tray pre-installed.



6. Remove the marked screws to disassemble the HDD tray from the system.

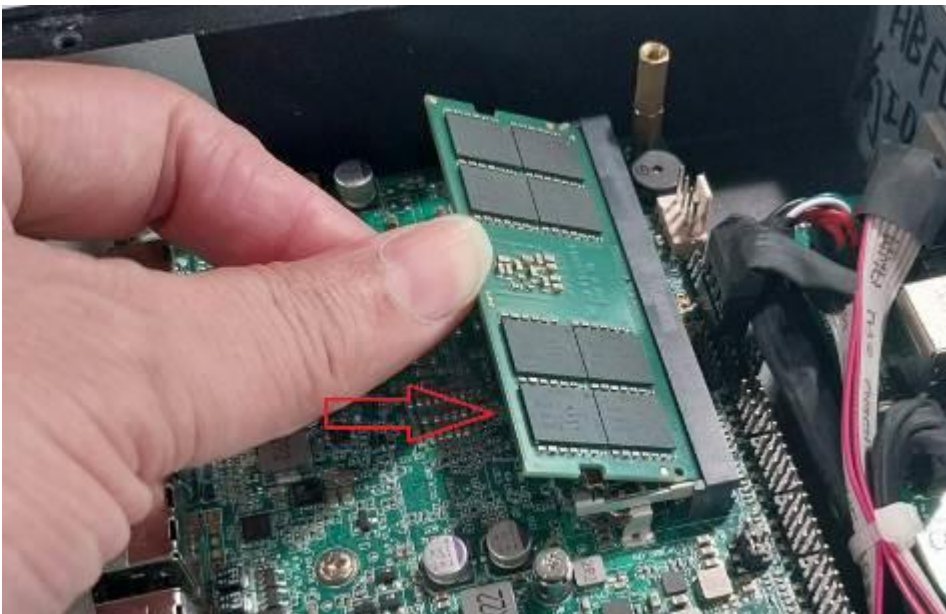


7. The overview of the internal structure of the system.

## **II. To Install SO-DIMM to the board**



1. Locate the SO-DIMM slot on the board.



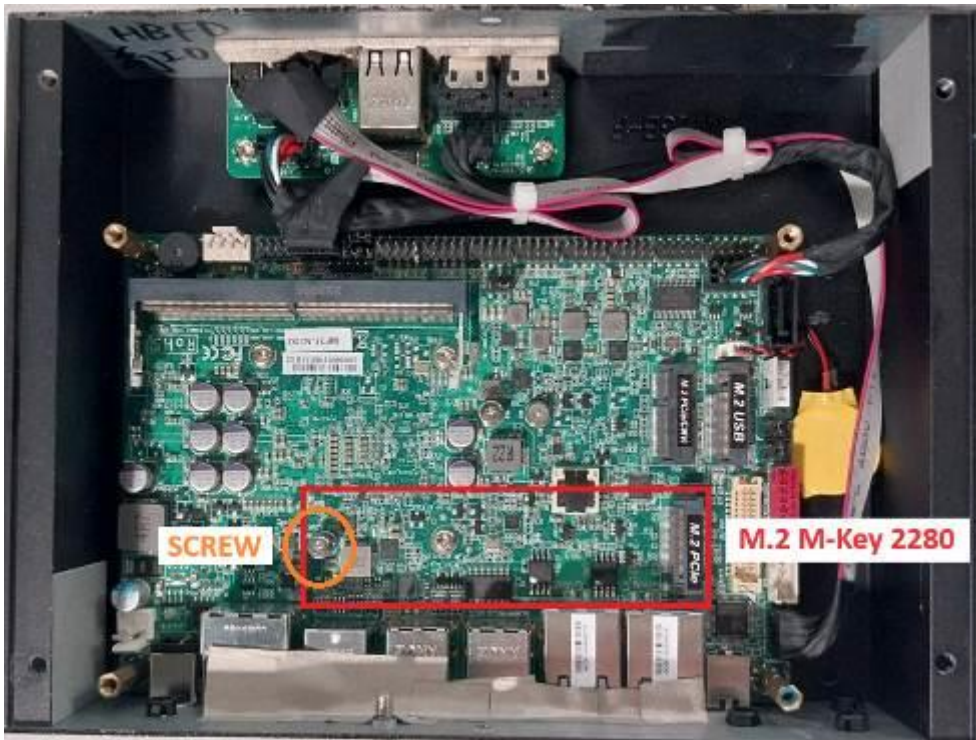
2. Insert the gold-figure side of the compatible SO-DIMM into the slot at a 30 degree angle. See to it that the break of the module fit into the notch of the slot and the golden-finger side should be fully plugged into the slot.



3. Press down to secure the SO-DIMM to the slot. The eject tabs will lock automatically if installing direction is correct.



### III. To Install M.2 M-Key (2280) PCIe Card



1. Locate the M.2 M-Key PCIe (2280) slot on the board. Prepare compatible M.2 M-Key PCIe (2280) card. To install compatible card, please remove the screw in the marked spot at first.



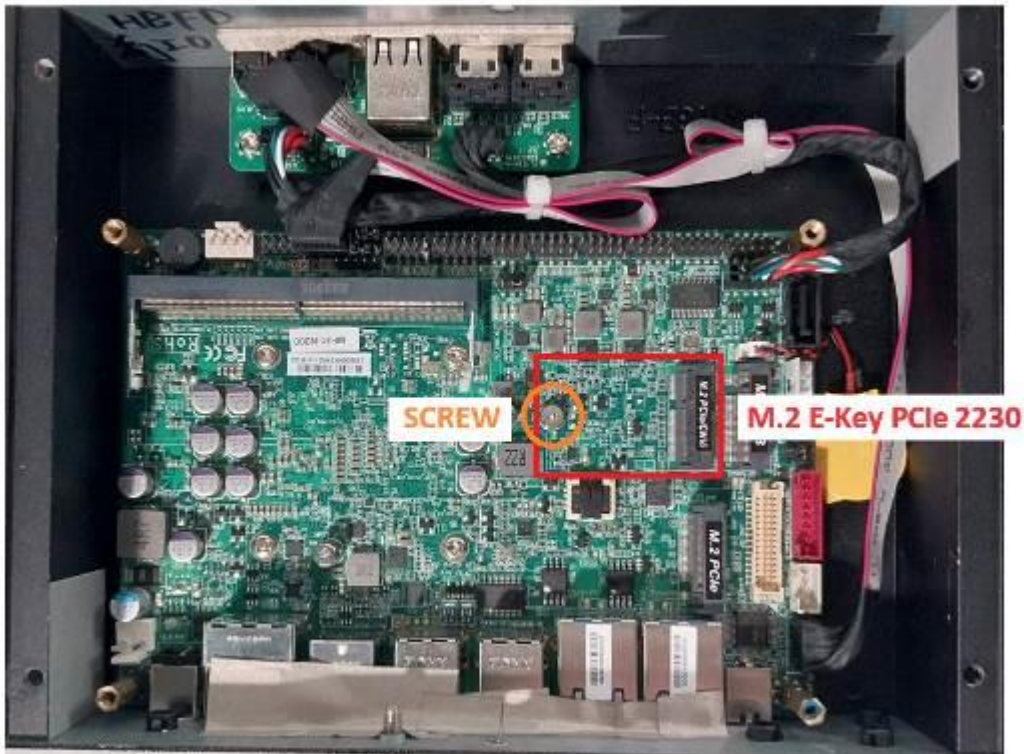
2. Insert compatible M.2 PCIe (2280) card into the slot. See to it that the golden-finger side should be fully plugged into the slot.



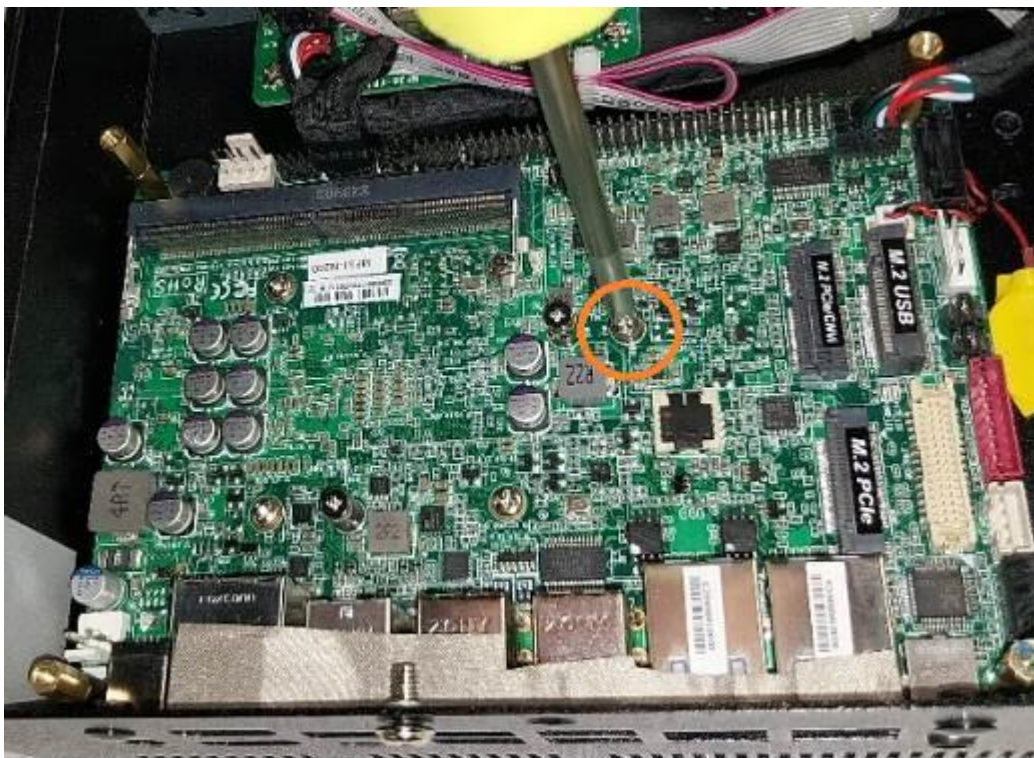
3. Tighten up the screw removed before to the marked spot to secure the card.

**Note:** The screw post and nut fixed at location MH4 by default for 8cm type-2280 card installation.

#### **IV. To Install M.2 E-Key (2230) USB 2.0/PCIe Card**



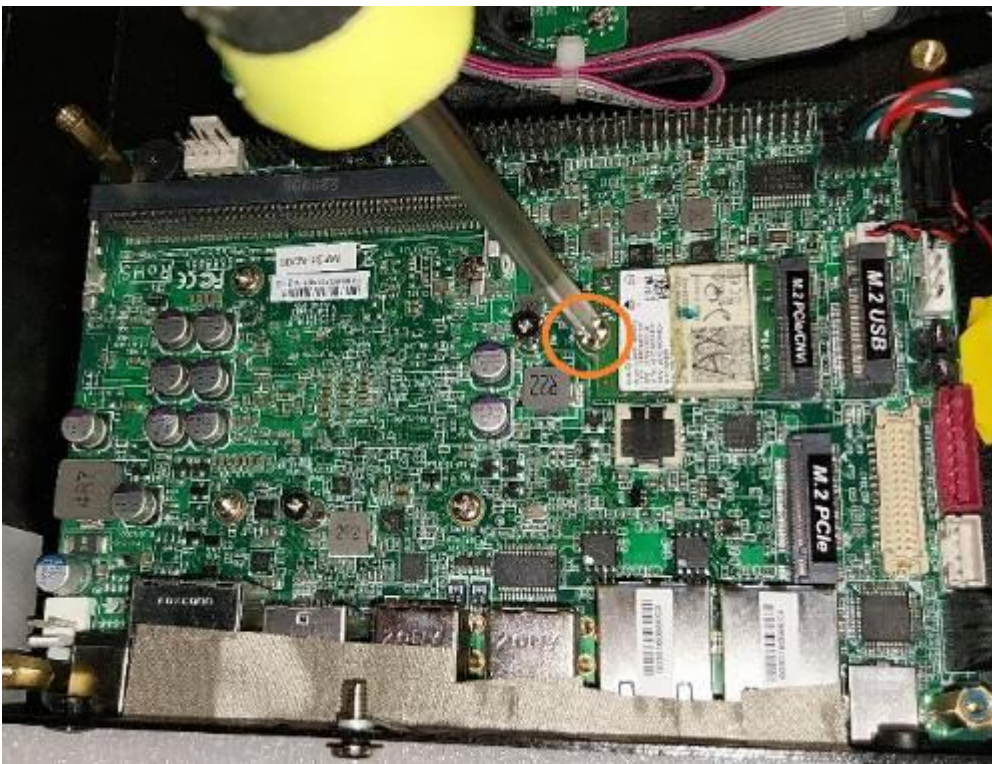
1. Locate the M.2 E-Key PCIe (2230) slot on the board. Prepare compatible M.2 PCIe, type - 2230 card.



2. Remove the marked screw (MH2) and use it to lock compatible card to the slot in later installation.



3. Insert the gold-figure side of the compatible card into the slot and press down. See to it that the golden-finger side should be fully plugged into the slot.



4. Secure the card to the board by tightening up the screw to the marked spot.



5. Locate the reserved antenna holes on the rear panel. Remove the dust-proof plugs on the marked spots from the panel to install the antenna.



6. Push this antenna screw head into antenna hole of the rear panel from the backside of the panel.

6-1



6-2

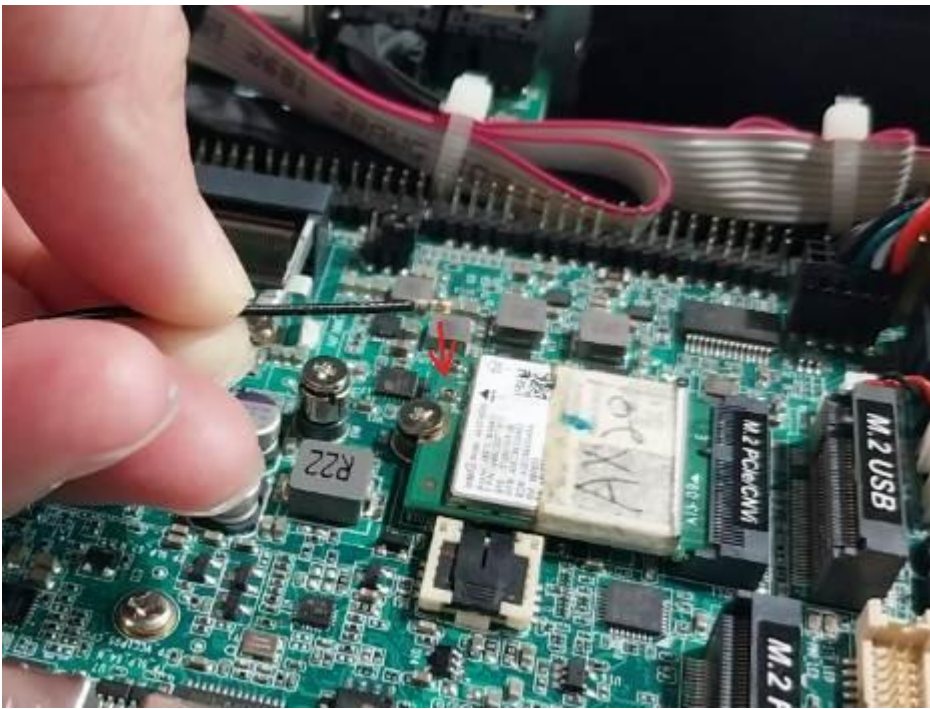


The washer ① & the hexagonal screw nut ②.

Push the washer ① through the antenna head.



7. And then lock the antenna screw head to the front side of the rear panel with the hexagonal screw nut<sup>②</sup> and tighten it up.



8. Press the metal hat on the end of the antenna string to corresponding antenna slot on the card as showed.



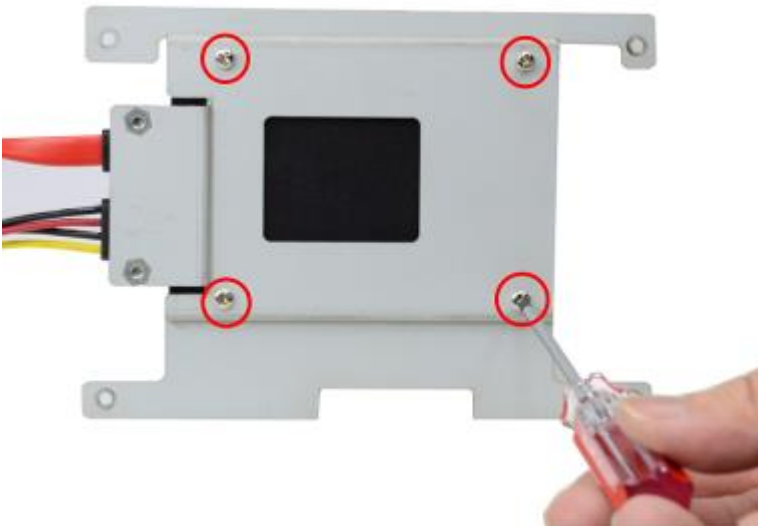
9. Repeat step 6 to 8, to finish installation of the other antenna.

**Notice:** When all necessary installations are finished, please make sure that all cables unplugged before installations are connected to their original locations before restoring the back cover to the chassis and screws on the front panel/back panel/top cover locked to its original locations (**Refer to Part I**). See to it that the cables inside are not blocked or pressed.

## **V. To Install Hard Disk**



1. Place compatible SATA HDD upon HDD tray as showed above. Plug this side of the cable to SATA power-in connector and SATA connector of the hard disk.



2. Turn over the HDD tray and fix 2.5" HDD upon HDD tray by tightening 4\* screws marked in corresponding spots.



3. Plug SATA power connector and SATA port connector into connectors onboard.





4. Adjust the installed tray as showed above. Fix HDD tray into the system by tightening up 4 screws marked. (refer to I-6)

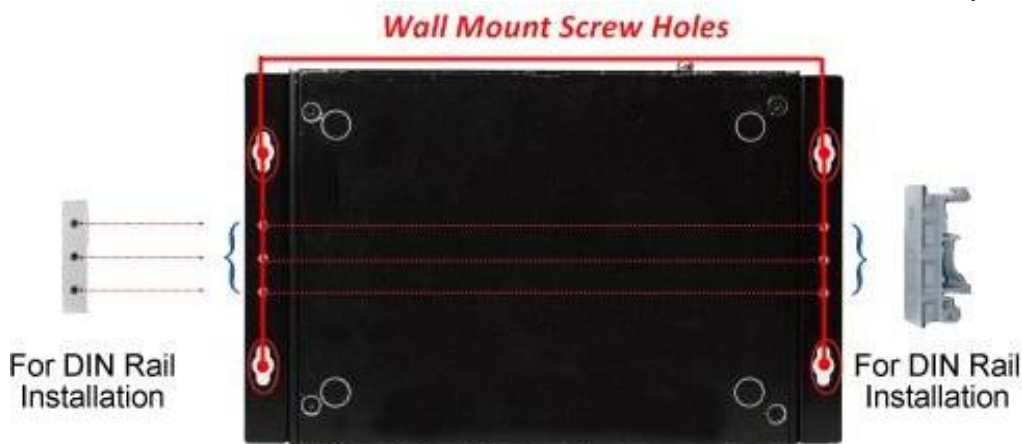
## **VI. To Wall Mount the system**



1. Install wall mount rack to the system by tightening two screws in the marked positions.



2. Then lock the other two screws on the other side in the same way.



3. Wall mount the system by tightening 4 screws in the marked positions on both sides of the wall racks.

**Note:** The 3 smaller holes on both sides of the rack are reserved for DIN rail installation. See to it that the three smaller screw holes on one installed rack should be parallel to those on the other rack; otherwise please readjust the racks for correct installation.